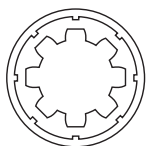


Belt Drive Actuators

H80 Series

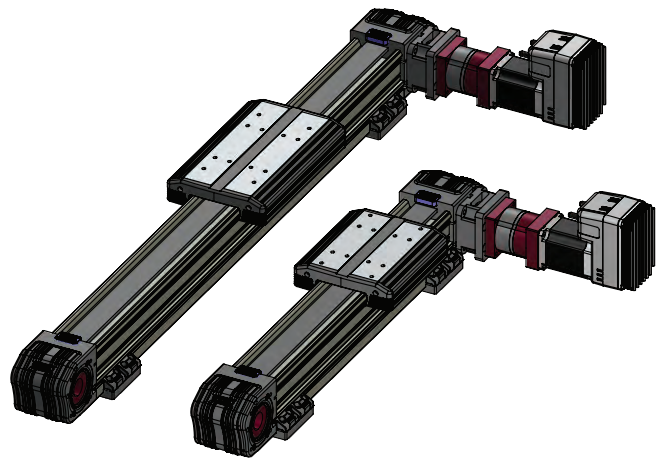
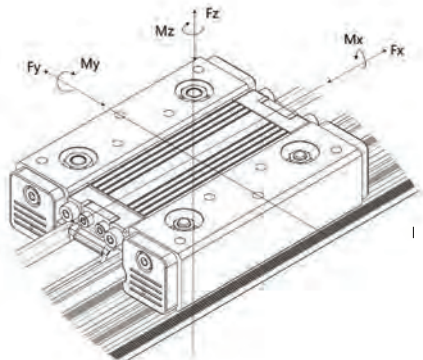
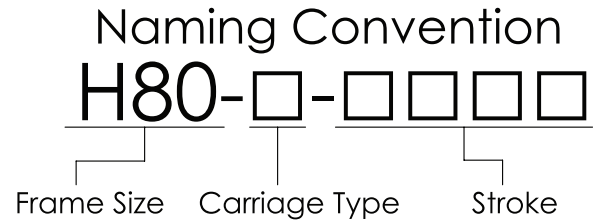


MYOSTAT MOTION CONTROL INC.

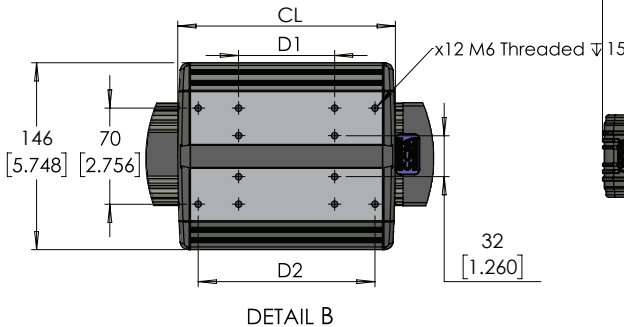
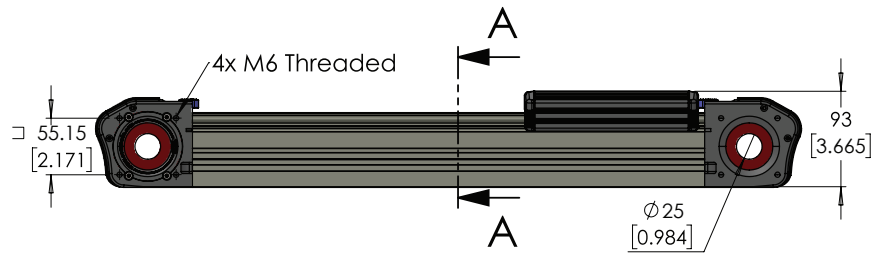
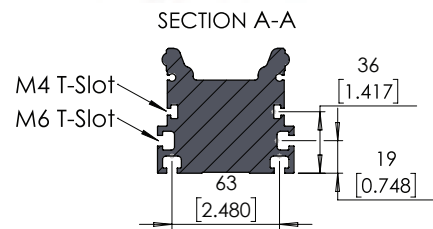
www.myostat.ca
info@myostat.ca
+1 905 836 4441

Technical Data		
	Unit	H80-L-□□□□ H80-S-□□□□
Max. Speed	m/s	6
Max. acceleration	m/s ²	20
Nominal Input Torque	Nm	10
Positional Repeatability	+/- mm	0.08
Pitch	mm	185
Belt Width	mm	33
Toothed Belt		K5M-33
Belt Expansion	%	0.18
Toothed Belt Tension		450
Fx Max.	N	700
Fy Max.		700
Fz Max.		560
Mx Max.	Nm	42
My Max.		47.6 71.4
Mz Max.		61.6 92.4
Mass for first meter		8.5
Mass per additional meter	KG	0.48

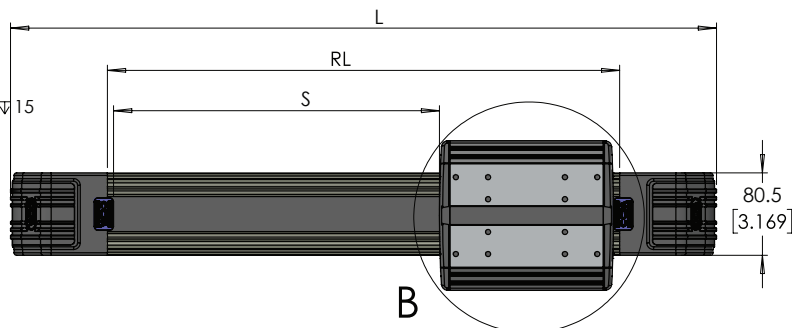
Variable Dimensions		
	H80 - S	H80 - L
RL - Rail Length	400-3700	
L - Overall Length	RL + 189	
S - Stroke	RL - CL	
CL - Carriage Length	170	240
D1 - Hole Dimension 1	70	87
D2 - Hole Dimension 2	133	151



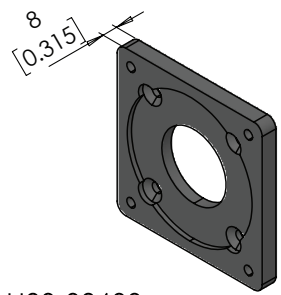
H80-L-□□□□ H80-S-□□□□
 Long and Short Carriage variants are shown with Inline Motor Mount, SX Gearbox and CM2-60A40C Motor Available with direct drive or gearbox



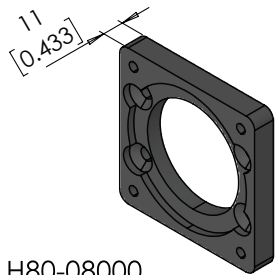
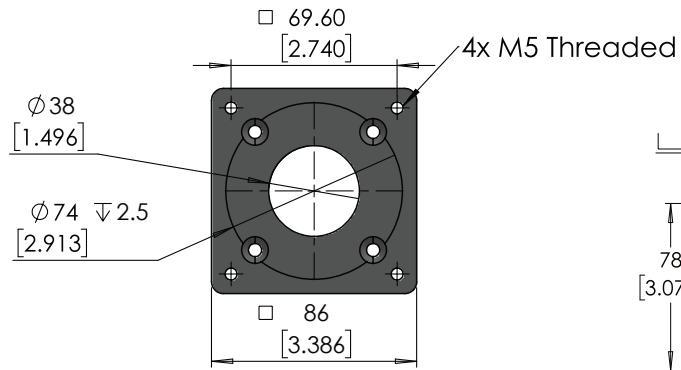
DETAIL B



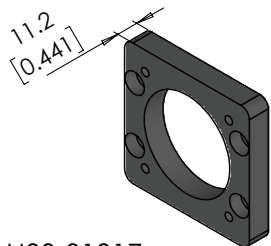
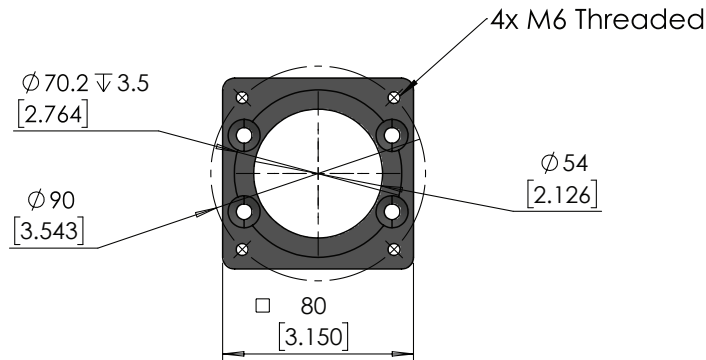
Unless otherwise specified, tolerance to be: CNS 4018 IT 14 Linear measures 0.5-3 ±0.1 3-6 ±0.1 6-30 ±0.2 30-120 ±0.3 120-315 ±0.5	DRAWN	M.Reynolds	04-10-2018	DO NOT SCALE DRAWING DIMENSIONS ARE METRIC TITLE: H80 Belt Driven Actuator
	CHECKED	M.Dank	04-10-2018	
	ENG APPR.	M.Dank	04-10-2018	
PROPRIETARY AND CONFIDENTIAL THE INFORMATION CONTAINED IN THIS DRAWING IS THE SOLE PROPERTY OF MYOSTAT MOTION CONTROL INC. ANY REPRODUCTION IN PART OR AS A WHOLE WITHOUT THE WRITTEN PERMISSION OF Myostat Motion Control Inc.		 Myostat Motion Control Inc. +1 905-856-4441 www.myostat.ca		PRT. NO. H80-□-□□□□
				REV 2.1



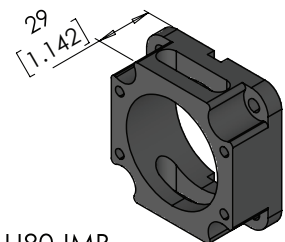
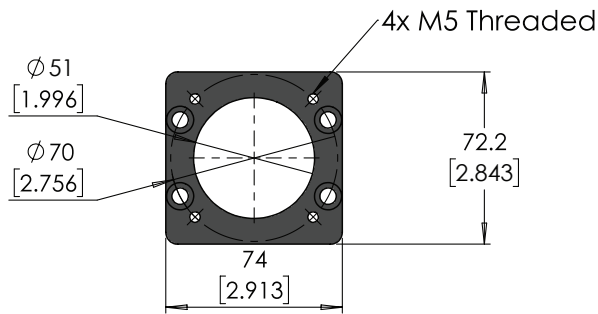
H80-08600
34 stepper Motor Adapter



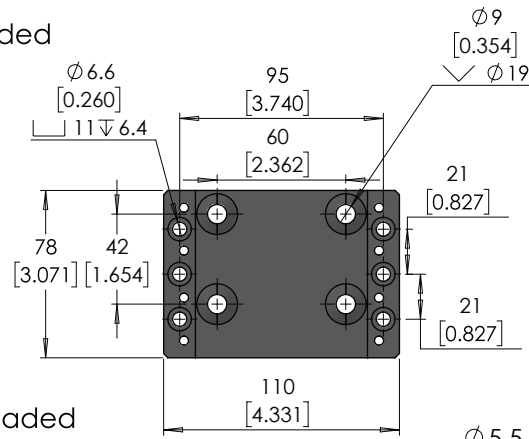
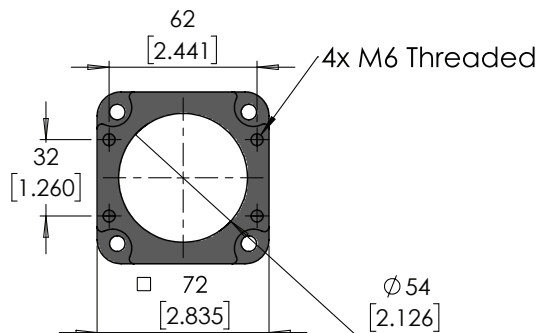
H80-08000
80mm Servo Motor Adapter



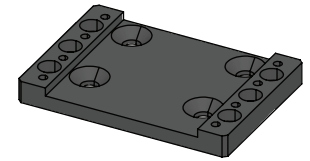
H80-01917
60 mm Servo Motor Adapter



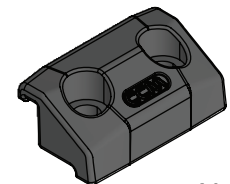
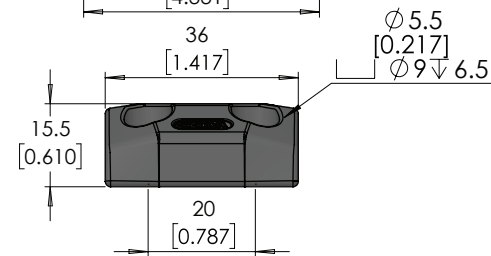
H80-IMB
H80 Inline Motor Bracket



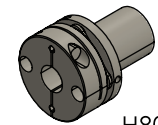
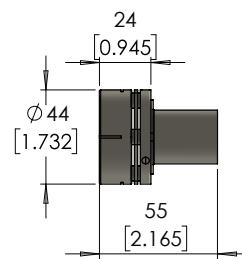
The H80 Mounting Kit includes:
1 H80-BKT
4 H80-FT



H80MK-BKT
Mounting Bracket



H80Mk-FT
Mounting Feet



H80-SC-□□
H80 Coupling

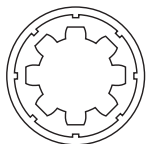
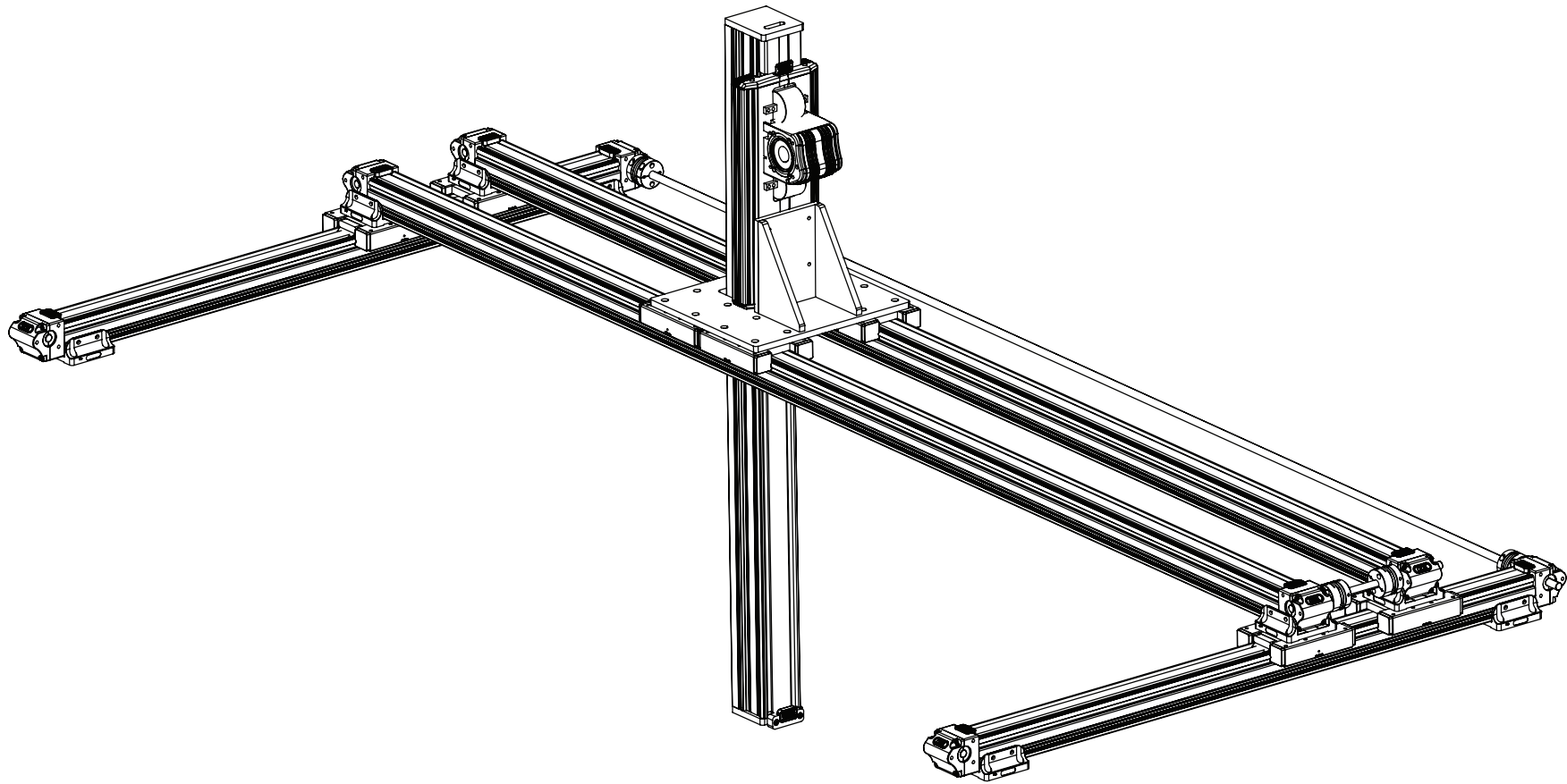
Part Number	Input Shaft Diameter
H80-SC-12.7	12.7
H80-SC-14	14
H80-SC-19	19
H80-SC-20	20

UNITS: mm [inch]

Unless otherwise specified, tolerance to be: CNS 4018 IT 14 Linear measures 0.5-3 ±0.1 3-6 ±0.1 6-30 ±0.2 30-120 ±0.3 120-315 ±0.5	DRAWN	M.Reynolds	04-10-2018	DO NOT SCALE DRAWING	DIMENSIONS ARE METRIC
	CHECKED	M.Dank	04-10-2018		
PROPRIETARY AND CONFIDENTIAL THE INFORMATION CONTAINED IN THIS DRAWING IS THE SOLE PROPERTY OF MYOSTAT MOTION CONTROL INC. ANY REPRODUCTION IN PART OR AS A WHOLE WITHOUT THE WRITTEN PERMISSION of Myostat Motion Control Inc.					TITLE: H80 Accessories
Myostat Motion Control Inc. +1 905-856-4441 www.myostat.ca			PRT. NO. H80-□-□□□□		

Belt Drive Actuators

H80-Z Series



MYOSTAT MOTION CONTROL INC.

www.myostat.ca
info@myostat.ca
+1 905 836 4441

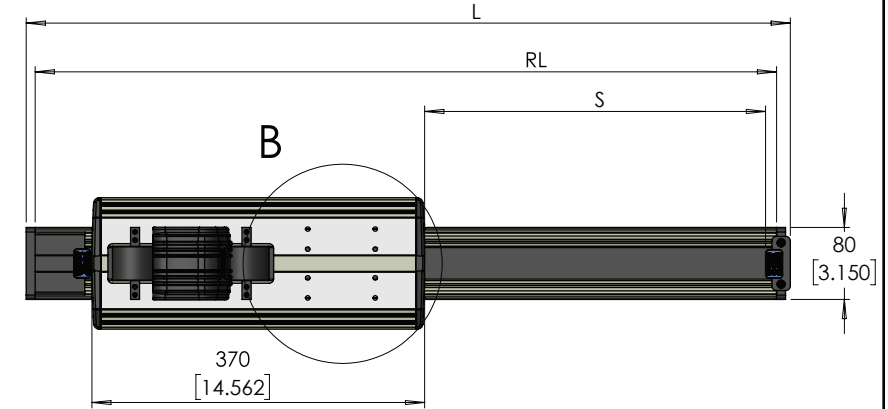
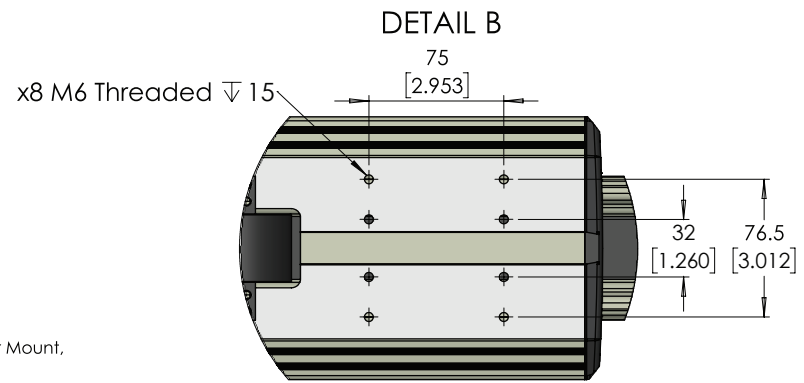
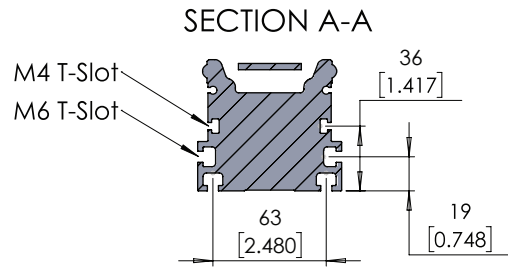
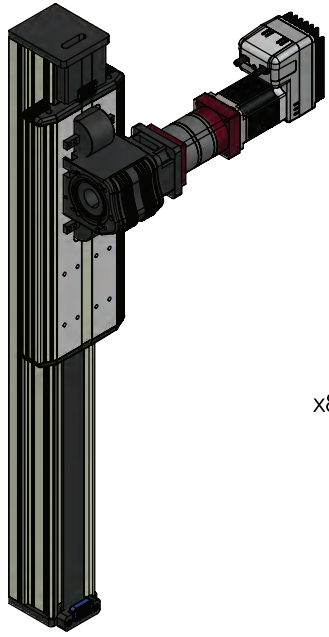
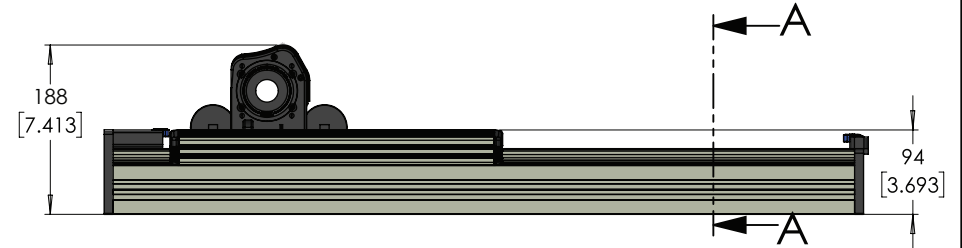
Technical Data		
	Unit	H80-Z-□□□□
Max Speed	m/s	4
Max acceleration	m/s ²	15
Torque	Nm	10
Positional Repeatability	+/- mm	0.08
Pitch	mm	185
Belt Width	mm	33
Toothed Belt	STD5M	
Belt Expansion	%	0.18
Toothed Belt Tension		450
Fx Max	N	
Fy Max		
Fz Max		
Mx Max	Nm	
My Max		
Mz Max		
First meter	KG	8.5
Continued meter per 100mm		0.48

Variable Dimensions	
RL - Rail Length	400-3700
L - Overall Length	RL + 25.25
S - Stroke	RL - 445


Naming Convention

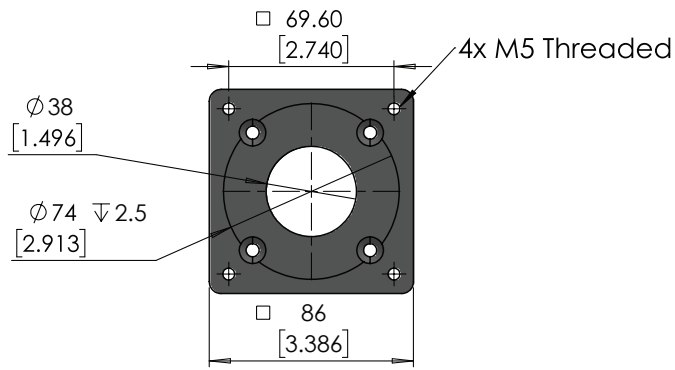
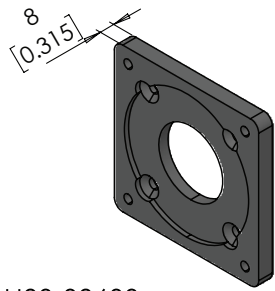
H80-Z-□□□□

Frame Size Carriage Type Stroke

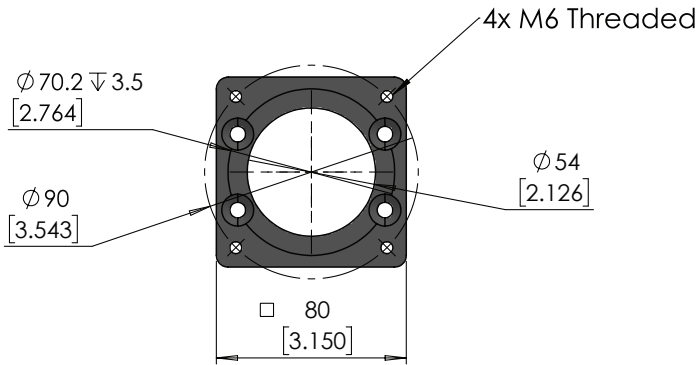
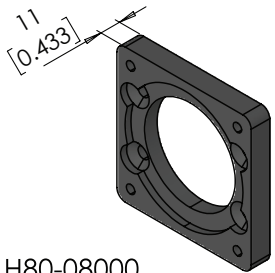


Cantilever type Carriage shown with Inline Motor Mount, SX Gearbox and CM2-60A40C Motor Available with direct drive or gearbox

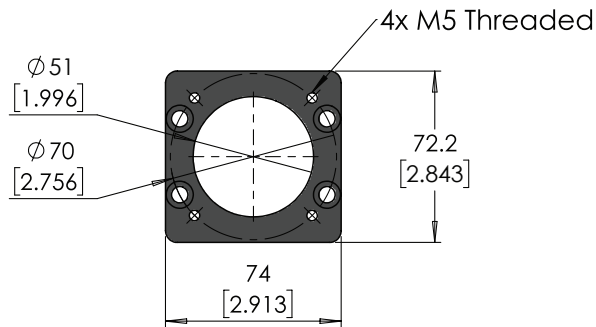
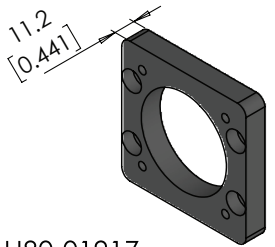
Unless otherwise specified, tolerance to be: CNS 4018 IT 14 Linear measures 0.5-3 ±0.1 3-6 ±0.1 6-30 ±0.2 30-120 ±0.3 120-315 ±0.5	DRAWN	M.Reynolds	04-10-2018	DO NOT SCALE DRAWING	DIMENSIONS ARE METRIC
	CHECKED	M.Dank	04-10-2018	TITLE: H80 Cantilever Belt Driven Actuator	
	ENG APPR:	M.Dank	04-10-2018		
PROPRIETARY AND CONFIDENTIAL THE INFORMATION CONTAINED IN THIS DRAWING IS THE SOLE PROPERTY OF MYOSTAT MOTION CONTROL INC. ANY REPRODUCTION IN PART OR AS A WHOLE WITHOUT THE WRITTEN PERMISSION OF Myostat Motion Control Inc.		 Myostat Motion Control Inc. +1 905-856-4441 www.myostat.ca		PRT. NO.	REV
				H80-Z-□□□□	2.1



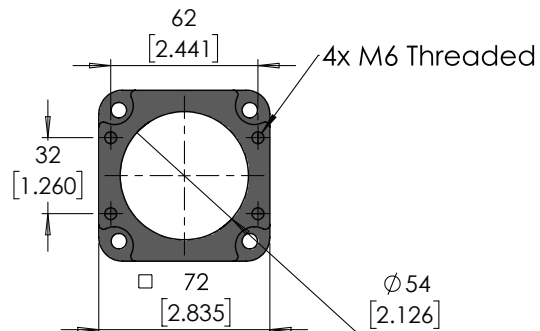
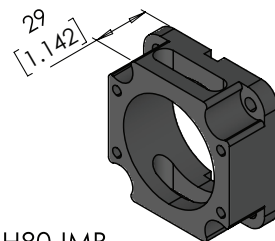
H80-08600
34 stepper Motor Adapter



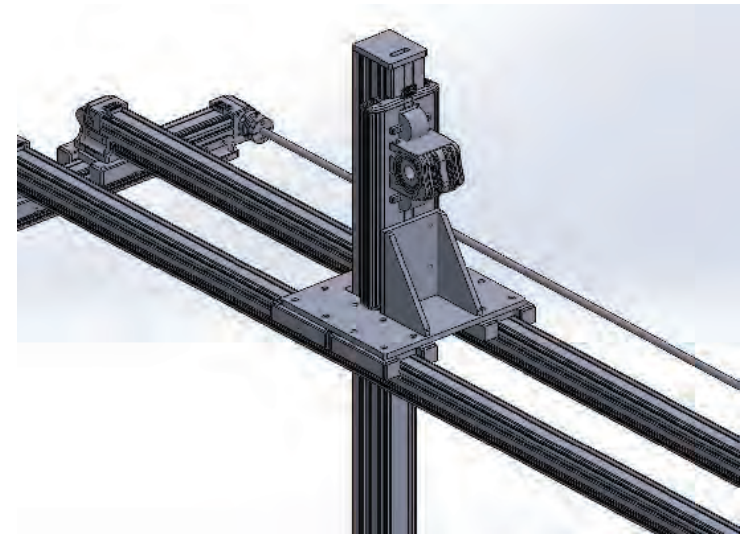
H80-08000
80mm Servo Motor Adapter



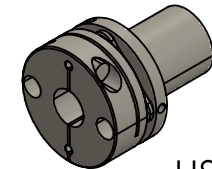
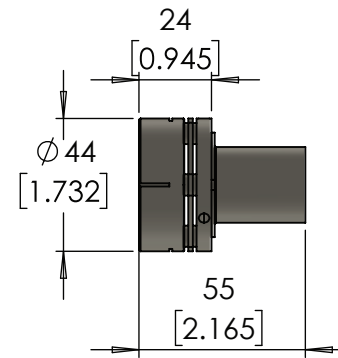
H80-01917
60 mm Servo Motor Adapter



H80-IMB
H80 Inline Motor Bracket



Representitive Assembly



H80-SC-□□
H80 Coupling

Part Number	Input Shaft Diameter
H80-SC-12.7	12.7
H80-SC-14	14
H80-SC-19	19
H80-SC-20	20

UNITS: mm [inch]

Unless otherwise specified, tolerance to be: CNS 4018 IT 14 Linear measures 0.5-3 ±0.1 3-6 ±0.1 6-30 ±0.2 30-120 ±0.3 120-315 ±0.5	DRAWN	M.Reynolds	04-10-2018	DO NOT SCALE DRAWING DIMENSIONS ARE METRIC	TITLE: <h1>H80-Z Accessories</h1>
	CHECKED	M.Dank	04-10-2018		
	ENG APPR.	M.Dank	04-10-2018		
PROPRIETARY AND CONFIDENTIAL THE INFORMATION CONTAINED IN THIS DRAWING IS THE SOLE PROPERTY OF MYOSTAT MOTION CONTROL INC. ANY REPRODUCTION IN PART OR AS A WHOLE WITHOUT THE WRITTEN PERMISSION OF Myostat Motion Control Inc.			Myostat Motion Control Inc. +1 905-856-4441 www.myostat.ca		PRT. NO.
			REV 2.1		